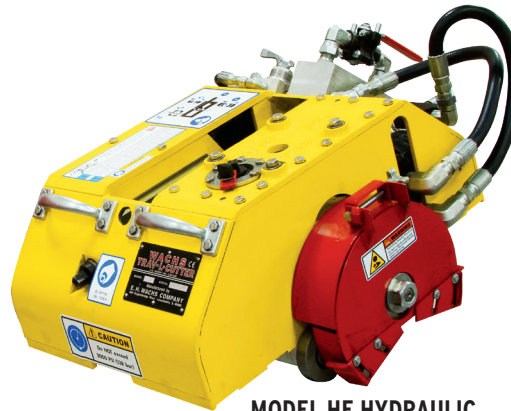


INDUSTRY LEADING PIPE CUTTER & BEVELER



MODEL E PNEUMATIC



MODEL HE HYDRAULIC

DESCRIPTION

When E.H. Wachs is mentioned, the product that often comes to mind is our famous Trav-L-Cutter. First introduced in 1949, Wachs Trav-L-Cutter is a portable milling machine designed to cut and bevel simultaneously on most pipe materials and schedules. Secured by its tensioning chain, the Trav-L-Cutter drives itself around the pipe as it machines, producing a weld ready surface.

Wachs Trav-L-Cutter will accommodate sizes from 6in-72in O.D. (DN150-1800) with the addition of additional chain sections. Machining of larger pipe sizes, vessels and other structures are possible - contact your local Wachs representative for details.

VERSATILE DESIGN

Offered as a Model E Pneumatic or Model HE Hydraulic, the Trav-L-Cutter is designed to operate horizontally, vertically or anything in between. Its special milling blades, with standard weld bevel angles of 30 and 37.5 degrees, removing .188in (4.8mm) of material during operation, leaving the pipe ends with a fine milled finish.

The chain drive system maintains continuous out-of-round compensation while providing positive drive under all conditions for accurate cuts. By using an optional guide track and special guide track wheels, accuracy of .005in (.127mm) can be maintained even in zero visibility situations. This cutting method facilitates section removal in the field, where new sections pre-cut by the same method can be quickly fitted in place.

OPERATES ANYWHERE

Wachs Trav-L-Cutter has been used in a wide range of applications, including natural gas, crude product and fuel lines, radioactive environments, and for demilitarizing ordinance including sectioning missile fuel cells. It can also be adapted to simultaneously cut off and groove pipe in one operation. Cutters are available for Victaulic and other grooved coupling systems.

The hydraulic Model HE is ideal for partial or complete water immersion and subsea applications available. Hydraulic models offer the inherent advantages of a completely sealed and self-lubricating closed loop system. The Model HE is particularly suited to field machining operations under the type of difficult environments often found on offshore drilling rigs, pipelines, and on construction work in rivers and harbors.

FEATURES

- Simultaneous Cutting & Beveling
- Horizontal and Vertical Operation
- Preferred Cold Cutting Method
- Compact, Portable Design
- Pneumatic or Hydraulic Drive
- Easy to Set-Up and Operate
- Fast and Accurate Cuts
- Fits 6in–72in OD (DN150–1800)



One Trav-L-Cutter can operate on multiple pipe diameters by adding additional chain sections



Highly versatile, the Trav-L-Cutter can cut vertically, horizontally or anything in between



First introduced in 1949, Trav-L-Cutters are highly durable and in use all over the world

SPECIFICATIONS

Machining Capacity: 6in-72in (153 to 1829mm) pipe, large diameter vessels.

Cutter Drive: Pneumatic: 4 hp governed air motor coupled with worm gearbox.

Hydraulic: As above, with hydraulic motor.

Cutter Speed: Pneumatic: Adjustable from 35-55 rpm for use on work-hardened alloys. Hydraulic: Adjustable from 0-60 rpm.

Feed: Pneumatic: 3/4 hp air motor coupled through overload clutch, gearbox and chain reduction to final machine drive sprocket. Hydraulic: 4 hp hydraulic motor.

Feed Method: Positive, nonslip chain drive.

Air Requirements:

100 cfm @ 90 psi (.05 m3/s @ 6.21 bar)

Hydraulic Requirements:

13-15 gpm @ 1500 psi

(49.2-56.78 lpm @ 103.42 bar)

not to exceed 2000 psi (137.9 bar)

Work Speed: 3in (76.2mm) surface feed/min maximum, or appr. 1 min/in (1 min/25.4mm) of pipe diameter. 10in (254mm) pipe = 10 min. Over 1/2in (12.7mm) wall as well as most alloys require reduced feed rate.

Clearance: 10in-12in (254-309mm) radial, 20in (508mm) axial

Controls (Model E & HE): Cutter on-off, feed on-off, with interlock to prevent machine feed unless cutter is turning, adjustable feed control. (Model HE Only) Flow control valves. Separate controls provide adjustable spindle speed and cutter speed. Forward/Reverse valve governs machine travel direction.

Weight:

Operating: 215 lbs (97.6 kg)

Shipping: 418 lbs (189.6 kg)

Finish: Powder coated enamel

Dimensions (LxWxH):

24in x 20in x 10.75in

(61 cm x 51 cm x 28 cm)

WARRANTY

E.H. Wachs Trav-L-Cutter and its associated parts are warranted against defects in materials and workmanship for a period of twelve months from the date of purchase. E.H. Wachs reserves the right to repair or replace only those parts which prove to have been defective at the time of purchase. This warranty becomes void if maximum flow and pressure ratings are exceeded.

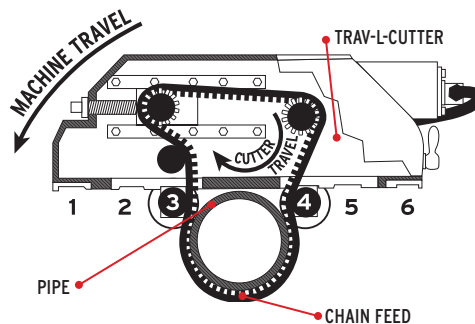
STANDARD EQUIPMENT

- Operating manual
- Operating tools
- Mounting chain for 6in diameter pipe
- Spare chain section
- Connecting pins
- Steel storage case
- Reversible feed motor
- 6' whip hose w/oiler (pneumatic only)

OPTIONAL EQUIPMENT

- Additional chain sections
- Additional cutter blades
- Spray mist cooling system
- Halogen-free cutter coolant
- Guide track and wheels to fit all pipe sizes up to 72in for vertical multiple pass cutting or high accuracy cutting
- Long cutter spindle for use with grooving cutters

MACHINE OPERATION DIAGRAM



TRAV-L-CUTTER SLITTING BLADES & BEVEL CUTTERS

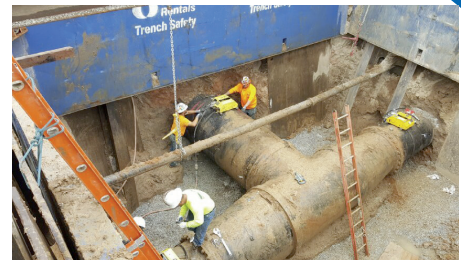
Wachs supplies a wide variety of Genuine Wachs cutting blades to meet most applications. These include slitting blades for various pipe materials and schedules, and beveling cutters for 37.5° and 30°. Most are in stock and ready for overnight shipment. Please contact your local Wachs representative for availability.



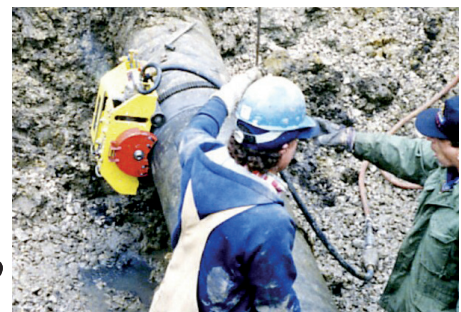
SLITTING SAW



BEVEL CUTTER



Trav-L-Cutter makes precision cuts enabling section removal in the field



Wachs Trav-L-Cutter is versatile and adaptable to various environments where cuts are needed



Severing a water pipe under pressure, the Trav-L-Cutter stays on track

CONTACT US FOR A DEMO OR QUOTE

E-mail: sales@turnvalves.com

Telephone: +1.847.537.8800

Fax: +1.847.520.1147

Visit our website: www.turnvalves.com

E.H. Wachs

600 Knightsbridge Parkway
 Lincolnshire, Illinois 60069 USA