

A Safer, Faster and More Cost Effective Way to Cut Pipe

**RENTAL
AVAILABILITY**



Cuts 2" to 8" OD

Part Number

DWG 208 29-000-08



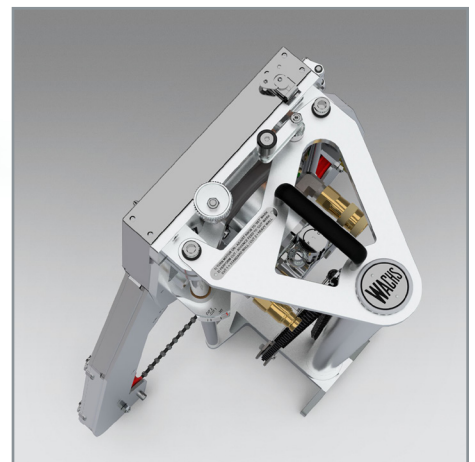
Cuts 4" to 16" OD

Part Number

DWG 416 29-000-16



DWG saws mount securely to workpiece for safety



DWG saws feature top mounted controls for safety and ease of use



Arms collapse for compact storage. Optional wheeled carrier shown.

Safety & Reliability

Wachs Diamond Wire Guillotine saws, available in two models, are designed and built for operator safety and pipe cutting efficiency. They mount securely to the workpiece and are capable of cutting steel, ductile, cast iron, concrete (CA), poly, PVC, clay and mixed media.

Wachs DWG saws utilize a fully enclosed diamond cutting wire that cuts pipe quickly and precisely, and can be mounted vertically, horizontally, or anywhere in between. Unlike ordinary handheld pipe chainsaws or abrasive wheel cutters, Wachs DWG saws resist binding, helping eliminate the risk of kickback injuries.

High Tech Pipe Cutting

Wachs DWG saws run on a clean, sealed hydraulic loop that removes the danger of monoxide fumes collecting in the hole. Their design allows the saw

to operate under the most extreme conditions, including partial or full water immersion, with less excavation needed.

Featuring stainless steel and aluminum construction for corrosion resistance, they use a collapsible, folding arm design for access to restrictive spaces, and for ease of transport and storage. DWG saws connect directly to a Wachs VMT valve maintenance trailer or VMS skid, the tool circuit of your backhoe, or any standard Class II hydraulic power source.

They feature one of the lowest costs per cut in the industry due to the longevity of the diamond cutting wire, and a lower total cost (the initial purchase combined with consumable costs) over the life of the saw. Lowest cost per cut, safer to use, and fast cutting – that's high tech pipe cutting!

DIAMOND WIRE SAW FEATURES

- Two models available, DWG 208 and DWG 416
- Precision built, lightweight, durable, corrosion resistant construction
- Arms collapse for compact storage, and access to restricted spaces
- Mounting chain secures the tool to the workpiece, preventing slippage & movement
- Does not bind like traditional chain or chop saws, eliminating kickback
- Clean closed loop hydraulic power allows partial or fully submerged operation
- Top mounted operator controls and feedback gauge are clear of cutting area
- Feed gauge shows wire pressure and cut angle
- Load-sensing feature increases wire life and cut speed
- Tool-free operation and maintenance
- Detachable, swing-away front inspection/cleaning cover

SPECIFICATIONS

Cutting Wire: Quick change continuous loop diamond wire cutting element

Hydraulic Drive: HTMA class II 8 GPM @ 2000 psi (30 LPM @ 137.9 bar)

Machine Capacity: Cold cuts most pipe material including mixed media

Feed Rate: Variable based on pipe material

Installation Method: Standard mounting chain, v-saddle base

Controls: Single crank, manual feed with gauge, motor on-off

Construction: Aluminum and stainless steel

STANDARD EQUIPMENT

- Hydraulic powered Diamond Wire Guillotine
- High density diamond wire loop assembly
- Spray coolant/wash-down system, lubricant
- Shipping/storage wooden crate
- Operator's manual

OPTIONAL EQUIPMENT

- Powder coated, tube steel and stainless steel wheeled storage/transport carrier
 - DWG 208 Carrier 29-4020-08
 - DWG 416 Carrier 29-4020-16
- Spare/replacement diamond wire loop assembly
 - DWG 208 Wire 29-608-00
 - DWG 416 Wire 29-616-00

