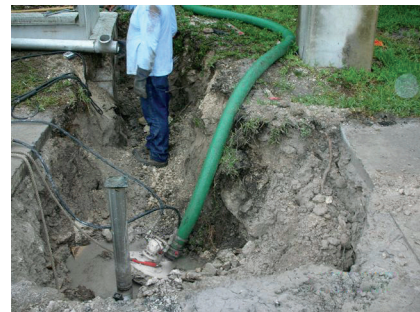


The WDP3500 Dewatering Pump is a high-power submersible, centrifugal type pump with a flow rate of up to 500 gallons per minute (1850 l/min) that requires no priming. The contaminant tolerant gear motor is uniquely designed for continuous high-speed operation. The motor drives the impeller directly, so there are no spindle bearings that require periodic lubrication or replacement. The cast stainless steel, semi-closed impeller resists corrosion. A series of seals on the drive shaft effectively keep hydraulic fluid and pumped water where they belong, while allowing the pump to be run dry without sudden seal failure. The water outlet is 3-inch pipe thread, fitted with a 3-inch groove fitting which can be connected to a cam hose and end fitting.



FEATURES

- Discharge 500 GPM water at a 40 foot head
- Large 3in Camlock discharge port
- Stainless steel impeller resists corrosion & corrosion resistant painted surface
- Direct drive-no spindle bearings requiring maintenance
- Convenient access to pumping chamber for cleaning
- Maintenance-free, self-lubricating hydraulic motor
- Lightweight - only 21 lbs.
- Pumps water and solids up to 3/8in
- Operate from any existing 7 to 12 GPM hydraulic system
- Draws water down to 3.5 inches
- Compact height of only 10.5in and a diameter of 10in



WDP3500 Dewatering Pump in action

OPTIONAL

- Lay-flat discharge hose 3 in x 25 ft with camlock fittings #08-400-03

SPECIFICATIONS

ITEM	US	METRIC
Outlet Size	3 in NPT / 3in Camlock	
Output Capacity	500 gpm	1890 lpm
Weight	21 lb	9.5 kg
Height	10.5 in	26.7 cm
Width	10.0 in	25.4 cm
Input Pressure	1000-2000 psi	69-139 bar
Input Flow Range	7-12 gpm	26-45 lpm
Porting	8 SAE 1/4-16 Straight Thread	
Connector	3/8 Flush-face HTMA Coupler	

WDP3500 PUMP PERFORMANCE

