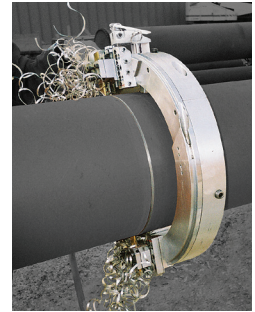




Engineered for
 Enhanced Cutting
 of High Alloy
 Materials

Genuine Wachs Tooling for the LCSF Low Clearance Split Frame is compatible with all models from 6" through 48" (DN 150-1200). Genuine Wachs cut and bevel form tools can machine all common pipe materials and most pipe schedules. Refer to tooling sheet for specific range. Single point tooling is used on heavy wall pipe and covers most pipe material and all pipe schedules. **Premium Wachs Tooling for high alloy materials is available on select part numbers (denoted by a "P" suffix), with additional numbers available by special order.**

Genuine Wachs Tooling is manufactured from premium tool steels utilizing exclusive designs to give you consistent quality cutting. Our OEM tooling is manufactured and tested to the highest standards in the industry. The numbers shown are commonly used tooling for most applications. If you have an application for tooling not listed, please contact the factory to speak with a technical sales representative.



BEVELING AND COUNTERBORE TOOLS

Description	Part Number	Application	Image
HSS Inside Bevel Tool		Short bevel tool for most materials. 30° - 1" (25mm) and 37.5° - 3/4" (19mm) maximum wall	
30° x 3 1/8" (79mm)	43-702-05		
37.5° x 3 1/8" (79mm)	43-703-05		
HSS Inside Bevel Tool		Long bevel tool for most materials. 30° - 1" (25mm) and 37.5° - 3/4" (19mm) maximum wall	
30° x 5" (127mm)	53-703-01 53-703-01P		
37.5° x 5" (127mm)	53-703-00 53-703-00P		
HSS Outside Bevel Tool		Outside bevel tool for most materials. 30° - 1" (25mm) and 37.5° - 3/4" (19mm) maximum wall	
30° x 3 1/8" (79mm)	43-707-05		
30° x 5" (127mm)	43-707-06		
37.5° x 3 1/8" (79mm)	43-708-05		
37.5° x 5" (127mm)	43-708-06		
HSS Double Bevel Tool		Double bevel tool for most materials. 3/4" (19mm) maximum wall	
30° x 3 1/8" (79mm)	43-709-05		
30° x 5" (127mm)	43-709-06		
37.5° x 3 1/8" (79mm)	43-710-05		
37.5° x 5" (127mm)	43-710-06		
HSS Compound Bevel Tool		Compound bevel tool for most materials. 1 1/4" (32mm) maximum wall for both tools	
10° x 37.5° x 4" (102mm) Inside	43-712-01		
10° x 37.5° x 4" (102mm) Outside	43-712-02		
10° x 37.5° x 5" (127mm) Inside	53-705-00		
10° x 30° x 5" (127mm) Inside	53-704-00		
4:1 Taper, Counterbore HSS Tool	60-700-04	4:1 Taper, counterbore most materials Requires 60-405-UC Universal Counterbore Slide or 60-428-XX Bridge Slide	

Consult with the factory for other bevel tool applications.



PARTING TOOLS

Description	Part Number	Application	Image
3/16" x 3 7/16" (4.76mm x 87mm) HSS Parting Tool (Sever tool)	43-711-00 43-711-00P	Standard parting, most materials up to 1" (25.4mm) wall (low clearance)	
3/16" x 5" (4.76mm x 127mm) HSS Parting Tool (Sever tool)	43-711-01 43-711-01P	Parting for most materials, up to 1" (25.4mm) wall	
1/4" x 6" (6.35mm x 152mm) HSS Parting Tool (Sever tool)	60-711-00 60-711-00P	Heavy wall parting, most materials, up to 2" (50.8mm) wall	
4.3" (110mm) Carbide Insert Holder Kit for 3/16" (4.76mm) parting insert	60-716-00 SUPERSEDES 43-704-00	Standard parting, most materials up to 1 1/2" (38.1mm) wall	
3/16" (4.76mm) Carbide Insert	60-717-00 SUPERSEDES 43-705-00	For use with 60-716-00 Insert Holder	
4.3" (110mm) Carbide Insert Holder Kit for 1/4" (6.35mm) parting insert	60-714-00 SUPERSEDES 47-701-00	Standard parting, most materials up to 1 1/2" (38.1mm) wall	
1/4" (6.35mm) Carbide Insert	60-715-00 SUPERSEDES 47-702-10	For use with 60-714-00 Insert Holder	

SINGLE POINT TOOLING

Description	Part Number	Application	Image
HSS Tool Bit for single point facing, beveling and flange facing. Standard 3/8" x 3/8" (9.53mm x 9.53mm) For use with LCSF Bridge Slide.	52-701-01 52-701-01P	Single point beveling Most materials less than 32RC hardness	
HSS Radius Tool Bit for J-prep	52-711-01	3/32" (2.38mm) radius	
	52-711-02	1/8" (3.18mm) radius	
	52-711-03	3/16" (4.76mm) radius	
Tool Holder for HSS Tool Bit	60-707-00	Heavy wall pipe beveling, all materials	